



United Way  
Emerald Coast

2020-2021

# ANNUAL REPORT



# A LETTER FROM OUR LEADERSHIP TEAM

It has been a busy year for United Way Emerald Coast (UWEC) and we're proud to share what we've been working on and how we're striving to make a positive impact on our community! Of course, we faced many difficult moments and unique challenges this year. Our response to the crisis and ability to be agile and creative in how we connected to our community members and provided resources has been the true test of our commitment to our mission.

UWEC is no stranger to working through times of crisis to assist the most vulnerable in our community. For more than 65 years, UWEC has been here, taking great pride in bringing resources and people together. That's what UWEC does 365 days a year, we bring together companies and caring individuals by aligning our combined forces on three critical areas: health, education, and financial stability. The building blocks for a successful life. Your partnership supports programs, builds and strengthens collaborations, and helps us identify what gaps need to be filled.

The pandemic gave UWEC an opportunity to create new partnerships and programs and step up as a leader to ensure that the ever-changing needs of our community were being met. We've seen so much support from many generous companies, individuals, and, as always, we work to find the most effective and efficient ways to address the needs of our residents with those resources.

It is because of YOU that we were able to come together in such significant ways. It is because of YOU that we were able to celebrate several incredible accomplishments this year. It is our pleasure to bring you this annual report to highlight those achievements. In the pages ahead, there are stories of lives changed, innovation, and social change. We hope you feel as proud as we do while reading it.

UWEC is a small team... none of our work would be possible without the support of community members, advocates, donors, and volunteers. We are deeply grateful to everyone who chooses UWEC as their philanthropic partner. We are proud to stand alongside you to serve our community, proud to work with our incredible Board of Directors, and proud of the amazing staff who worked so hard during such a difficult year.

As for the year ahead, we remain steadfast in our commitment to build a stronger region – a region where all children have the opportunity to learn and thrive, where families are financially secure and where people can live their lives to the fullest because they have the good health to do so – today and for generations to come! With you by our side, I know we can make this vision a reality.

THANK YOU for your commitment to United Way Emerald Coast.



**Kelly Jensen**  
President & CEO



**Caralee Gibson**  
2020-21 Board Chair

**Marshall Buscemi**

Publix Super Markets

**Mike Coupe**

Cox Communications

**Jacob Foreman**

Coldwell Banker

**Jason Fulghum**

Okaloosa County Sheriff's Office

**Cindy Gates**

Okaloosa County School District

**Alan Gieseaman**

White-Wilson Medical Center

**John Hofstad**

Okaloosa County

**Bernard Johnson**

Gulf Power Company

**Gordon King**

Okaloosa Gas District

**Valerie Manley**

BBVA Bank

**Kelly Murphy-Redd**

Murphy-Redd Marketing

**Justin Myers**

World Impact Real Estate

**Holly Pendarvis**

Publix Super Markets

**Todd Scali**

Synovus Bank

**Robin Shaw**

CHELCO

**Nathan Sparks**

One Okaloosa EDC

**Paul Swan**

Nationwide (retired)

**Randy White**

Northwest Florida State College

**Caralee Gibson - Chair**

GSC Systems

**Kim Cox - Campaign & Vice Chair**

United Fidelity Bank

**Alexis Tibbetts - Immediate Past Chair**

Walton County School District

**Jessica Atkinson - Advocacy & Public Policy Chair**

Raymond James Financial

**Thomas Everidge - Community Impact Chair**

Publix Super Markets

**Linnette Wolfgram - Audit Chair**

Community Bank

**Matthew Zasada - Treasurer**

Carr, Riggs, and Ingram

# BOARD OF DIRECTORS



**WE ENVISION A COMMUNITY WHERE RESOURCES ARE ALIGNED TO ENSURE PEOPLE ARE HEALTHY, FAMILIES ARE STRONG, AND YOUTH AND ADULTS ARE ENGAGED IN STRENGTHENING SOCIAL BONDS.**


**WE SERVE DONORS, ADVOCATES AND VOLUNTEERS WITH THE ORGANIZATION AND LEADERSHIP THEY REQUIRE TO PROVIDE FINANCIAL STABILITY, EDUCATION OPPORTUNITIES, AND HEALTHY LIVES TO THEIR COMMUNITY.**




# 40% OF OUR NEIGHBORS DON'T MAKE ENOUGH INCOME TO THRIVE

These are hard-working families who live paycheck to paycheck; for them, reduced hours, a family emergency, or unexpected expense can be catastrophic. We refer to these families as **ALICE**. ALICE is a United Way acronym that helps us define financial insecurity in our region. It stands for **A**sset **L**imited, **I**ncome **C**onstrained, **E**mployed and represents our neighbors, daycare teachers, grocery store associates, hotel clerks, home health aides, and more. They are absolutely essential to our community's success.

The bottom line is, ALICE households are forced to make difficult choices. They often skip preventative healthcare, accredited child care, quality food, or car insurance to get by. These "savings" threaten their health, safety, and future, and the costs are high for both ALICE and the wider community. That's why United Way Emerald Coast fights everyday to make sure ALICE households have access to basic necessities like affordable healthcare, quality education, and financial support when they need it the most.



40% of all households in Okaloosa and Walton counties fall below the ALICE threshold. That breaks down to **13%** living below the Federal Poverty Level and **27%** making less than the **Household Survival Budget**.



**ALICE works hard to make ends meet.**  
**52.6%** of ALICE households work full-time  
**38.8%** are retired or not in the workforce  
**8.6%** are unemployed or work part-time

**The Household Survival Budget** reflects the bare minimum that a household needs to live and work today. Locally, that averages out to \$27,528/year for a single adult, \$72,312/year for a family of four with young children, and \$30,000/year for a single senior. It does not include savings for emergencies or future goals like college. These typical household costs are well above the Federal Poverty Level of \$12,490 for a single adult and \$25,750 for a family of four.

# EVENTS, PROGRAMS & INITIATIVES



## Cram the Van

Supplies collected during Cram the Van were sent to 14 local schools, ensuring over 7,000 students had the tools needed for a successful year.



We received a Walton County CARES Act Grant which allowed us to serve 340 individuals in Walton County by distributing 96 \$100 grocery vouchers and 388 grocery deliveries.



## Rock United

UWEC's virtual singing competition fundraiser featured 26 local musical artists and raised over \$50,000.



## Emerging Leaders

UWEC's Donor Network for young professionals held its first after-hours networking mixer.



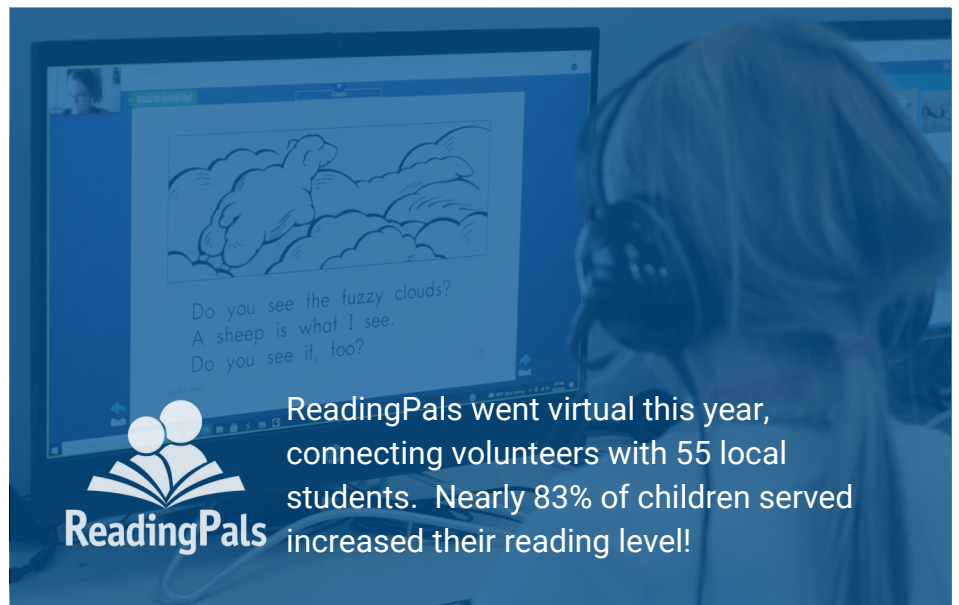
## Coats for Kids

More than 400 coats were distributed to 11 partner agencies, keeping the children of our community warm through the winter.



**Days of Caring**

Volunteering went virtual this year, engaging local individuals and businesses in random acts of service.



ReadingPals went virtual this year, connecting volunteers with 55 local students. Nearly 83% of children served increased their reading level!



**VITA**

Thanks to our partnership with Caterpillar 2 Butterfly Outreach Center, 502 free tax returns were filed, putting money back in our neighbors' pockets.



**RSVP**

We received an AmeriCorps Seniors grant to launch the Retired and Senior Volunteer Program in Okaloosa and Walton counties.



**Corporate Volunteerism**

We partnered with our corporate partners to create COVID-19 care kits and snack packs full of nutritious snacks for local children.



9 Little Free Pantries were installed across Walton County, where neighbors can take what they need and give what they can, thanks to a Walton County CARES Act grant.

**Community Partner Roundtables**

We hosted 7 roundtable discussions for local nonprofit agencies to collaborate, sharing ideas and resources to better serve the community.

**EFSP**

We distributed \$244,913 in federal Emergency Food and Shelter Program funding to agencies in Okaloosa and Walton Counties.

# COMMUNITY INVESTMENT

26,392  
CLIENTS SERVED



Okaloosa County: 22,667  
Walton County: 3,725

\$325,000 INVESTED



\$110,000 Health  
\$105,000 Education  
\$110,000 Financial Stability

14 PROGRAMS FUNDED  
SUPPORTING 13 PARTNER AGENCIES

- AMIkids Emerald Coast
- Big Brothers Big Sisters of Northwest Florida
- Boys and Girls Clubs of the Emerald Coast
- Catholic Charities of Northwest Florida
- Children in Crisis
- Crossroads Center
- Early Learning Coalition
- Fresh Start for Children & Families
- Homelessness & Housing Alliance
- Mental Health Association of Okaloosa and Walton Counties
- OASIS Florida
- Okaloosa County Council on Aging
- Sharing and Caring

## HEALTH



213,470

meals served to families in Okaloosa and Walton counties



2,113

individuals received access to affordable healthcare



72%

of individuals served received affordable treatment—reducing unhealthy, risky behaviors

## EDUCATION



733

students received after school care and/or individualized tutoring



83%

of students served maintained or improved their school attendance



3 out of 5

students improved academically and are achieving academic success

## FINANCIAL STABILITY



58%

of individuals served were stabilized in permanent affordable housing



102

households are moving toward financial independence



177

individuals accessed safe shelter



## BRANDON'S STORY

### AMI KIDS

Brandon, who is on the autism spectrum, has struggled with school for his entire life. Eventually, due to behavioral problems, truancy, and a failure to engage with the courses, Brandon left the traditional classroom.

In January 2020, Brandon came to AMI Kids to earn his GED and participate in their job readiness curriculum. Though he and his parents initially had doubts about his ability to succeed, Brandon was able to overcome patterns of misbehavior, gaining confidence through positive reinforcement and encouragement from AMIKids staff.

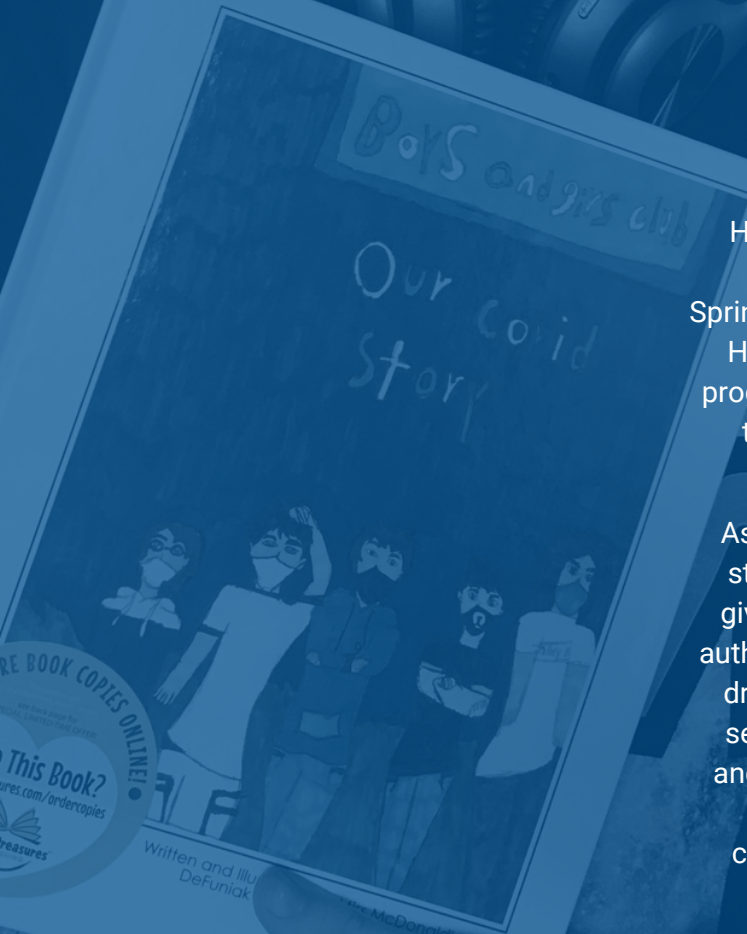
Though it was a long road with many setbacks, Brandon earned his GED and was empowered to believe in himself. Brandon currently works for Publix and hopes to attend Okaloosa Technical College this fall.

## HUNTER'S STORY

### BOYS AND GIRLS CLUBS OF THE EMERALD COAST

Hunter, a 12-year-old middle schooler, has been an active member of the Defuniak Springs Boys & Girls Club since August 2020. His club participates in the "Project Learn" program, which challenges students to keep the skills and knowledge they learn in the classroom fresh, reducing learning loss.

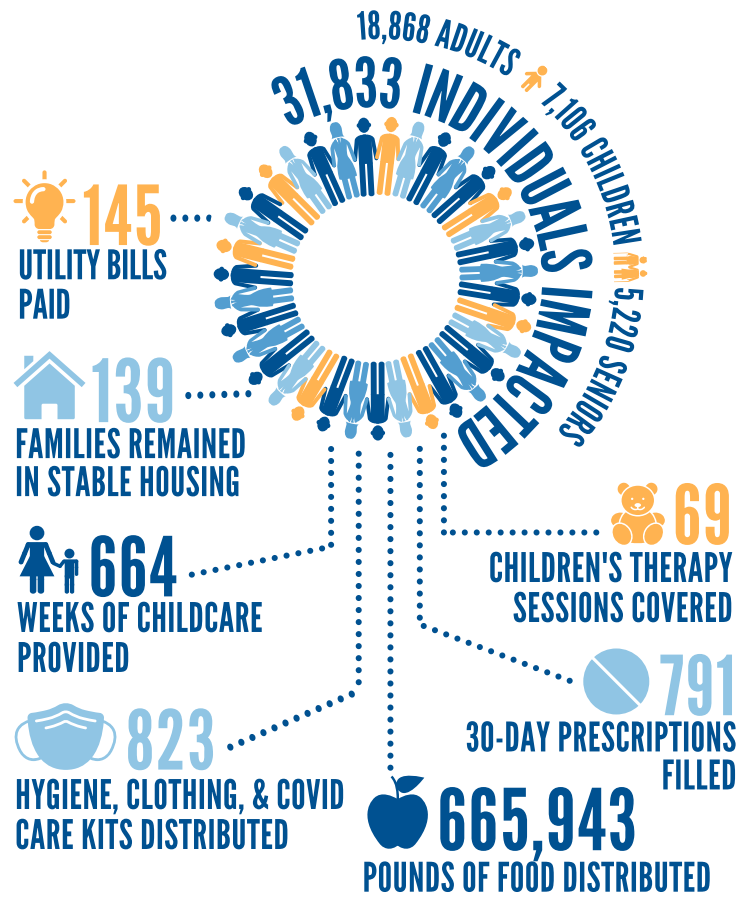
As part of a "Project Learn" writing activity, students at the Defuniak Springs club were given the opportunity to become published authors. Hunter, who loves to draw portraits, drew a picture of his club peers which was selected as the book's cover! As an author and illustrator, Hunter has strengthened his creativity, writing, critical thinking, and communication skills; characteristics that promote lifelong academic success.



# COVID-19 RELIEF

In 2020-21 the final two phases of our COVID-19 Relief Fund were distributed, bringing the total to \$318,888. Thanks to Gulf Power Company and all of our corporate and individual donors, 46 grants were awarded to 20 nonprofit agencies, 2,767 volunteer hours were coordinated, and 31,833 individuals in Okaloosa and Walton counties were impacted.

Because of your generosity, families were able to get back on their feet after cut hours and lost wages, individuals received critical prescriptions even though they lost their insurance benefits, children had a safe place to go while their parents worked, and parents kept a roof over their families' heads through rent and utility assistance.



## WALTON COUNTY CARES ACT

This year we were proudly selected for a Walton County CARES Act Grant, which helped us continue our work addressing food insecurity during the pandemic. With that funding we launched the Little Free Pantry initiative and found homes for 10 pantries throughout Walton County. Additionally, 96 families received Publix gift cards and 388 individuals had 5 days' worth of food delivered right to their doorsteps by our incredible volunteers.



# TOP 25 MOST GENEROUS WORKPLACES

# Publix®



United Parcel Service  
Walton County School District  
CHELCO  
Hancock Whitney Bank  
Southland Utility Services  
White-Wilson Medical Center  
Regions Bank

Okaloosa Gas  
HCA (Fort Walton Beach Medical  
Center & Twin Cities Hospital)  
Newman Daily Resort Properties  
Warren Averett CPAs and Advisors  
COLSA  
Okaloosa County

United Way Emerald Coast  
Walmart  
Eglin Federal Credit Union  
Carr Riggs Ingram LLC  
Bit-Wizards  
Synovus  
Hilton Sandestin Golf Resort & Spa

## Assets

Cash & Cash Equivalents	\$670,217
Cash - Restricted	\$185,321
Certificates of Deposit	\$200,769
Campaign Pledges Receivable, Net	\$568,661
Property & Equipment, Net	\$138,763
<b>Total Assets</b>	<b>\$1,763,731</b>

## Liabilities & Net Assets

### Liabilities

Accounts Payable	\$3,634
Grants Payable	\$327,369
PPP Loan	\$59,003
Donor Designations	\$95,569
<b>Total Liabilities</b>	<b>\$485,575</b>

**Total Net Assets** **\$1,278,156**

**Total Liabilities & Net Assets** **\$1,763,731**

# STATEMENT OF FINANCIAL POSITION

\*unaudited

July 1, 2020 - June 30, 2021



**f** **@** **in** **t**  
@UWEmeraldCoast  
www.united-way.org

112 Tupelo Ave  
Fort Walton Beach, FL 32548  
850-243-0315